

thirteen

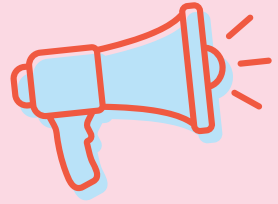
A quick guide to anti-social behaviour

What is anti-social behaviour?

Anti-social behaviour is a range of behaviours that can cause nuisance and annoyance, or harm and distress to a person.

It's a wide range of unacceptable activity, including:

- Vandalism
- Drug related activity
- Harassment / abuse
- Violence
- Persistent noise nuisance



What isn't anti-social behaviour?

Your neighbours and other people in your community all live differently.

Sometimes, you may find their behaviour disruptive, but this isn't always anti-social behaviour.

This could include:

- General household living noise
- Cooking odours
- Car parking
- Babies crying
- DIY at reasonable times of the day
- One-off parties
- Disputes on social media



How to report it to us?

If the property involved is also a Thirteen tenant, then please call us on **0300 111 1000**, and we'll be happy to try and help you to resolve the issue.

Who else can help?

You can also report anti-social behaviour to your local council. Or, if it's criminal activity then you will need to speak to the police.